

THREADS OF TIME

10 December 2021 - 26 February 2022

No 20

Arts

YANG-EN HUME | SEUNGWON JUNG | SHIVANJANI LAL | SUNGHOON YANG



Sunghoon Yang, **Memory I** (2015),
Oil on canvas,
130 x 130 cm



Shivanjani Lal, **Ganna ki khet (small)** (2021),
Plaster and haldi (turmeric)
(sourced Deptford, London),
Dimensions variable



Yang-En Hume, **Fossil 4** (2019),
Solar sensitive ink on watercolour paper,
59 x 42 cm

No 20 Arts
20 Cross Street
London N1 2BG

No 20 Arts is delighted to present **THREADS OF TIME**, a group show featuring artworks by **Yang-En Hume**, **Seungwon Jung**, **Shivanjani Lal**, and **Sunghoon Yang**. This exhibition brings together a group of artists as they delve into the past through personal memories and cultural histories.

Yang-En Hume is an Australian-Singaporean artist based in London who works with textiles, installation, and photograms. Concerned by archival practices, Hume questions why only certain objects are memorialised in museums.

Using found lace, fabric, and familial photographs sourced from flea markets, Hume creates hanging installations, and photograms. Scans and photographs of found objects are printed onto translucent fabric and often interwoven with embroidery. In their layering and distortion, they embody the fragmentary nature of memory, while representing moments of the past, and personal histories.

Born in Seoul, South Korea, **Seungwon Jung** lives and works in London. Jung creates work at the intersection of digital and traditional craft, using photography to create tapestries, sculptures, and prints.

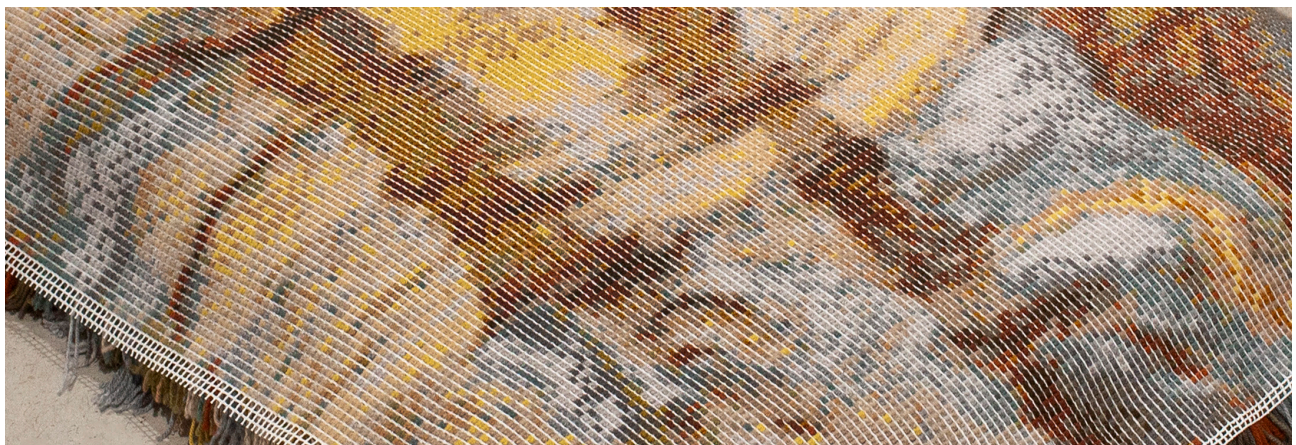
She uses imagery of rock depositions which have formed geological strata. Each layer coordinates to a period of time, revealing millions of years of the past. Jung takes the imagery and uses her computer to create a textile pattern, from which she hand-knots a tapestry, reflecting on the passage of time.

Shivanjani Lal is an Australian artist with Indo-Fijian ancestry living and working in Australia and the UK. Drawing on historical documents, familial photographs, and specifically sourced materials, Lal creates sculptures, installations, and works on paper.

Red threads embroidered across maps show the route of the British ships which transported Lal's ancestors from India to Fiji to work as indentured labourers on sugar-cane fields. Her work aims to account for this history, through exploring familial migration, ancestral loss, and futures of healing. A connection to sugar is seen again in Lal's sculptures. Each sculpture has been created from casts of sugar cane, and in some cases, the plaster has been infused with turmeric. The broken parts of these fragile sculptures speak to the fragmented histories of diasporic communities.

Sunghoon Yang is a South Korean artist based in Daegu. Using catalogues and photographs of traditional Korean ceramics, Yang creates paintings which explore ideas of memory and time.

Memory I and *Memory II* each show a singular ceramic, filling the canvas. Based on moon jars found in domestic museums, and national and private collections, these works reflect the hands through which the pottery has passed over hundreds of years. They embody the stories of each person who once held it, in the cracks and imperfections visible on the surface.



Seungwon Jung, Detail of *Ductile Deformation* (2021),
Hand knotted tapestry, 98 x 148 cm

About No 20 Arts

Opened in January 2017, No 20 Arts is a centre for contemporary arts. A multi-functional space, the gallery hosts a programme of exhibitions, performances and events that support emerging and established artists working across all media.

For more information and prices, please contact info@no20arts.com

No 20 Arts
20 Cross Street
London N1 2BG

+44 (0)207 226 9083
info@no20arts.com
no20arts.com