

NO 20 ARTS | LEMA



Anish Kapoor (1954 -)
Untitled, 1989
Gouache, pencil and oil on paper
58.5 x 50 cm (unframed)



Arthur Lanyon
Ears & Curls, 2016
Oil, acrylic and marble dust on panel
57h x 34w cm



Arthur Lanyon
Garage Man, 2016
oil, acrylic on panel
45h x 61w cm



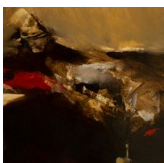
Arthur Lanyon
Old Rock, 2018
Oil and acrylic on panel
62h x 46w cm



Augustine Carr
Summa Theologica, 2016
CNC-milled SikaBlock sprayed Black
78h x 110w x 55d cm



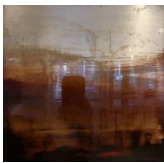
Charlotte Barker
Shell, 2015
Glazed ceramics
27h x 61w x 48d cm



Jim Threapleton
Nightwatch (Study XX), 2019
Oil and varnish on 250 gm Arches paper
14h x 14w cm
Framed: 45h x 35w cm



Jim Threapleton
Nightwatch (Study XXI), 2019
Oil and varnish on 250 gm Arches paper
14h x 14w cm
Framed: 45h x 35w cm



Max Maxwell
Motive II, 2019
Oils and metal leaf on aluminium panel
25h x 25w x 5d cm



Mike Ballard
Studio snipe 3, 2019
Oil, spray paint, acrylic, vinyl, grease proof paper and binder on card
84h x 59w cm



Mike Ballard
Studio snipe 4, 2019
Oil, spray paint, acrylic, vinyl, grease proof paper and binder on card
84h x 59w cm



Monica Perez Vega
Sequoia, 2019
heat-formed reclaimed acrylic sheet and spray paint
240h x 50w x 45d cm



Monica Perez Vega
Canyon Wall, 2019
heat-formed reclaimed acrylic sheet and spray paint
180h x 22w cm



Monica Perez Vega
Monarch, 2019
heat-formed acrylic sheet off-cut, thermoplastic, vinyl adhesive and spray paint
25h x 17w cm



Paolo Staccioli
Stele, 2002
Lustre ceramics
43h x 23w x 8d cm



Ruben Brulat (1988 -)
Pied gauche qui traverse et tombe dans l'eau qui boue, 2016
Mixed media on cotton
200h x 145w cm



Shaun Fraser
Soil Immemorial, 2018
Bronze
30h x 68w x 7d cm



Terry Frost
Construction Study, early 1960s
Gouache on paper
67h x 22.50w cm
Framed: 96h x 71w cm